

MATERIALS KEY

- 1. Clay tiles/ natural slate
- 2. Red brick
- 3. Red brick plinth
- 4. Hanging tiles
- 5. Sash/ casement windows
- 6. Opaque window
- 7. Tile canopy
- 8. Timber post with brackets



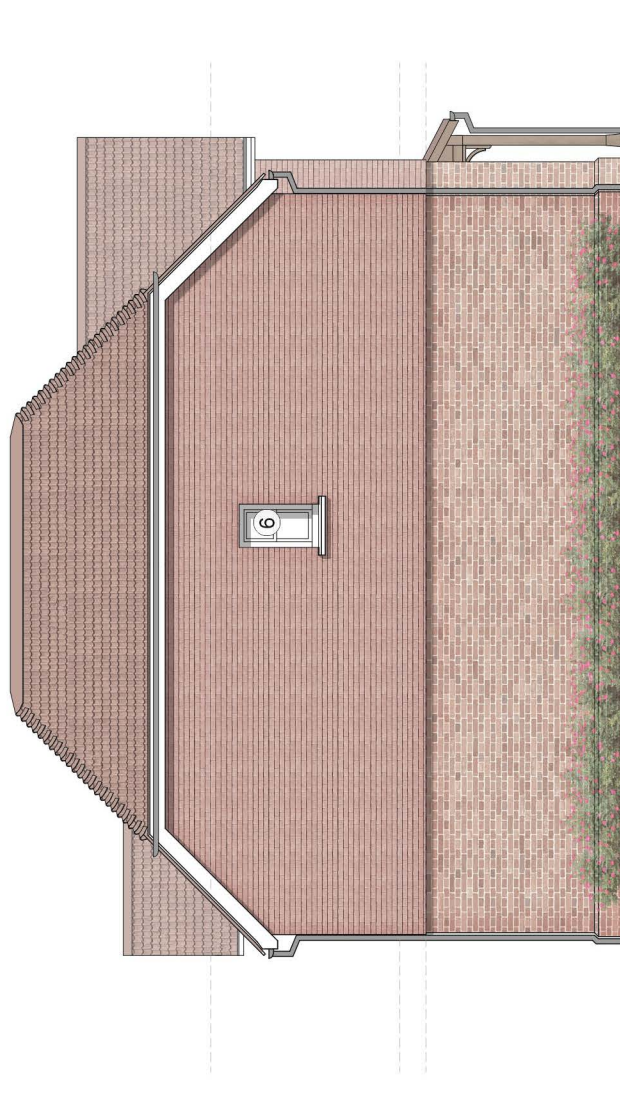
FRONT ELEVATION



SIDE ELEVATION



REAR ELEVATION



SIDE ELEVATION



REVISIONS |